

NON RETURN VALVE

DIAMETER 700 - 1200 (mm)

SIGMAFLOW Non Return Valves are available in different dimensions as per the specific needs of clients. Meticulously tested on various quality parameters to ensure its performance, the product is manufactured using latest technology for sturdy construction, durability, accurate dimensions and smooth finish.



Fig. 1 DN 700-1200

TECHNICAL FEATURES

Valve Type	: Swing Type Multi Door
End Connection	: Flanged Ends
Working Pressure	: PN6/ PN10
Working Temperature	: Upto 70°C
Test Pressure	: Body - 1.5 x PN, Seat - 1.1 x PN
Application	: Pumping Stations, Water Distribution Water Treatment Plants, Industry

SALIENT FEATURES

- ◆ Ductile Iron Construction gives the valve added strength
- ◆ Suitable for Clear Water applications
- ◆ Varied Applications
- ◆ Epoxy protection, inside and outside
- ◆ Dash pot system available
- ◆ Flow of Direction marked for easy installation

CONFORMITY TO MANUFACTURING CODES & STANDARDS

General Design & Manufacturing	: IS5312 (Part 2)
Valve Face to Face Dimensions	: IS5312 (Part 2)
Flange Standard	: IS1538
By Pass Arrangement	: IS5312 (Part 2)
Valve Inspection	: IS5312 (Part 2)



STANDARD MATERIALS OF CONSTRUCTION

1.	Body Inlet	Ductile Iron/ Grey Iron/ Cast Steel	8.	Disc Seat Ring	Nickel Weld Overlay/ Stainless
2.	Body Outlet	Ductile Iron/ Grey Iron/ Cast Steel			Steel 410/ 304/ 316 or Bronze
3.	Diaphragm	Ductile Iron/ Grey Iron/ Cast Steel	9.	Bush	Bronze/ Stainless Steel
4.	Door/Disc	Ductile Iron/ Grey Iron/ Cast Steel	10.	Fasteners	Carbon Steel/ Stainless Steel
5.	Hinge Pin	Stainless Steel 410/ 304/ 316	11.	Stopper	Stainless Steel/Zinc Free Bronze
6.	Gasket	EPDM/Natural Rubber			
7.	Diaphragm Ring	Nickel Weld Overlay/ Stainless			
		Steel 410/ 304/ 316 or Bronze			

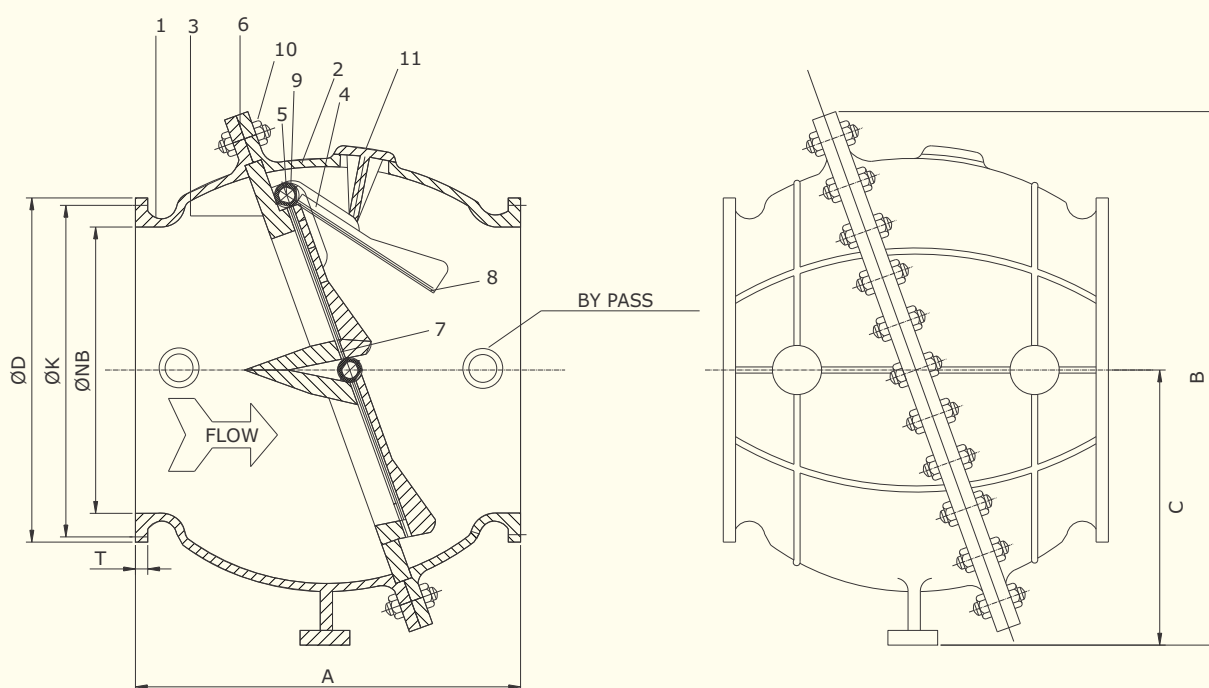


Fig. 1 DN 700-1200

DIMENSIONS

Size (mm)	A	B	C	K	D	T	n-Ød
700	1000	1445	750	840	895	38.5	24-Ø31
750	1045	1445	750	900	960	40	24-Ø31
800	1118	1555	810	950	1015	42	24-Ø34
900	1250	1660	860	1050	1115	44	28-Ø34
1000	1250	1730	915	1160	1230	47	28-Ø37
1100	1396	2070	1080	1270	1340	50	32-Ø37
1200	1500	2250	1175	1380	1455	53	32-Ø40

Higher sizes available on request

all dimensions are in mm

SIGMA FLOW CONTROL INDIA LIMITED

Tobacco House, Room # 506, 5th Floor, 1 & 2 Old Court House Corner, Kolkata - 700 001, West Bengal, India.

Phone: +91 33 2262 4871 Fax: +91 33 2262 4872 Email: enquiry@sigmaflow.in

Offices in UK, MEXICO & CHINA