

AIR VALVE

DIAMETER 40 - 200 (mm)

Sigma Flow Air Valve is available in small orifice, large orifice, double orifice, kinetic and tamper proof options. System efficiency is maintained by venting air via the air valves. With non-clogging and self sealing balls for trouble free operation.



DN 40-200

HYDRAULIC TEST PRESSURE

Rating	PN 1.0	PN 1.6	Duration
Body Test	15kg/sq.cm.	24kg/sq.cm.	5 Min
Seat Test	10kg/sq.cm.	16kg/sq.cm.	2 Min

SERVICE CONDITIONS

Maximum Working Pressure	:	10Kgf/cm ² / 16Kgf/cm ²
Working Temperature	:	Upto 50° C
Application	:	Release Air
Service	:	Raw Water

NOTE

- ◆ All dimensions are in mm unless otherwise stated
- ◆ Pressure Class: PN-10/16
- ◆ Operation: Self Operated
- ◆ Marking: Brand/Size/Rating/Heat No. & Sl. No.
- ◆ Painting: Black Japan/Epoxy

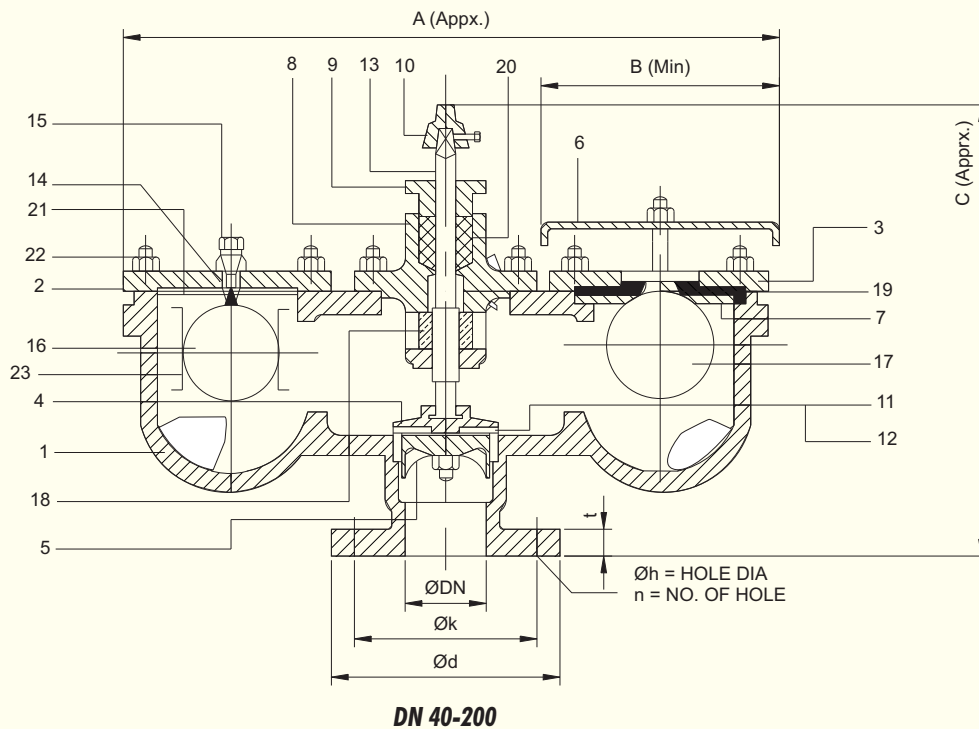
CONFORMITY TO MANUFACTURING CODES & STANDARDS

General Design & Manufacturing	:	IS 14845/2000 (Fig DS-I)
Flange Standard Conformity	:	IS 1538
Ends	:	Flanged
Type	:	Double Orifice in - built Isolation



MATERIAL OF CONSTRUCTION

1.	Body	Cast Iron/Ductile Iron	13.	Spindle	Stainless Steel
2.	H. P. Cover	Cast Iron/Ductile Iron	14.	H. P. Orifice Cover	Bronze
3.	L. P. Cover	Cast Iron/Ductile Iron	15.	H. P. Orifice Plug	Bronze
4.	Valve	Cast Iron/Ductile Iron	16.	H. P. Ball (Float)	Timber Core with Rubber Coating
5.	Valve Holder	Cast Iron/Ductile Iron	17.	L. P. Ball (Float)	Timber Core with Rubber Coating
6.	Cowl	Cast Iron/Ductile Iron	18.	Nut for Spindle	Bronze
7.	Joint Support Ring	Cast Iron/Ductile Iron	19.	L. P. Seat Ring	Bronze
8.	Valve Cover	Cast Iron/Ductile Iron	20.	Packing	Jute & Hemp
9.	Gland	Cast Iron/Ductile Iron	21.	Gasket	Rubber
10.	Cap	Cast Iron/Ductile Iron	22.	Bolts & Nuts	Carbon Steel
11.	Seat Ring	Bronze	23.	Guide Bush	Bronze
12.	Valve Seat	Nitrile Rubber			



DIMENSIONS

Size (mm)	Width	Width	Height	P.C.D	O.D	Flange Thickness	# of Hole - Ø Hole
DN	A	B	C	ØK	ØD	T	n-Ød
40	442	210	371	110	150	16	4-Ø18
50	442	210	407	125	165	16	4-Ø19
80	504	236	431	160	200	21	4-Ø19
100	634	280	501	180	220	22	8-Ø19
150	862	430	620	240	285	23	8-Ø23
200	988	506	735	295	340	24.5	8-Ø23

SIGMA FLOW CONTROL INDIA LIMITED

Tobacco House, Room # 506, 5th Floor, 1 & 2 Old Court House Corner, Kolkata - 700 001, West Bengal, India.
Phone: +91 33 2262 4871 Fax: +91 33 2262 4872 Email: enquiry@sigmaflow.in

FACTORY ADDRESS:

Chatterjee Industrial Estate, Bankra, Jhilpar, Howrah - 711 403, West Bengal, India.

Offices in UK, MEXICO & CHINA