

# 921Di EXCAVATOR

**LIUGONG**  
MADE IN INDIA

TOUGH WORLD. TOUGH EQUIPMENT.

This machine is the most essential construction equipment. It is used for activities like digging, demolitions, material handling, general grading, brush cutting, lifting and placing of pipes, open pit mining and river dredging.



Engine	Cummins 6BT5.9 - C140
Gross Power	140hp @ 2,000 rpm
Maximum Digging Depth	5,875 mm
Bucket Capacity	0.95m <sup>3</sup>
Operating Weight	21,000 Kg
Track Length	4,170 mm



# 921Di SPECIFICATIONS >>>



## ENGINE

Make	CUMMINS
Model	6BT5.9 - C140
Gross Power	140hp @ 2000 rpm
Peak Torque	614 Nm@1,500 rpm
Number of Cylinders	6
Displacement	5.9L

## ADVANCE CAPC SYSTEM

Advanced "Computer Aided Power Control" for optimized power distribution & efficient operation

Power Saving Function Auto Idle

Dual Working Modes: P- Power Mode  
E- Economy Mode

## UNDERCARRIAGE

Shoe Width	600 mm
Number of Shoes per Side	46
Number of Upper Rollers per Side	2
Number of Bottom Rollers per Side	7

## HYDRAULIC SYSTEM

Main pump Type	Two variable displacement piston pumps
Max. flow	2 x 210 LPM
Pilot Pump	Gear pump
Implementation System Pressure	32 MPa
Travel System Pressure	32 MPa
Swing System Pressure	25.5 MPa
Pilot System Pressure	3.9 MPa

## SWING SYSTEM

Swing Speed	12 rpm
Swing motor	Axial piston motor
Swing reduction	Planetary gear reduction
Swing bearing	Lubrication Grease bathed
Swing brake	Multi wet disc ( Spring applied Hydraulic released )

## DRIVE & BRAKES

Drive method	Hydrostatic
Drive motor	Axial piston motor
Reduction system	Planetary reduction gear
Max. Drawbar pull	195KN (19884 kgf)
Max. travel speed (high/low)	4.9 kmph /2.9 kmph
Gradeability	35 ° (70%)
Parking brake	Multi wet disc ( Spring applied Hydraulic released )

## SERVICE CAPACITIES

Fuel Tank	412L
Engine Oil	25L
Cooling System	30L
Hydraulic Reservoir	230L
Hydraulic System Total	330L

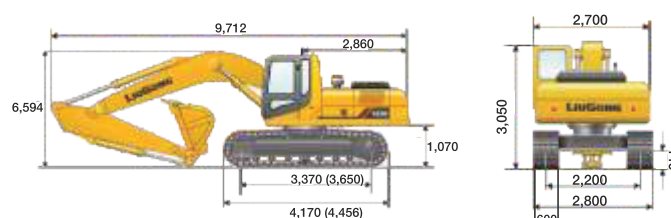
## OPERATING WEIGHT

Shoe Ground Pressure	45.8 kPa
Operating Weight	21,000 kg

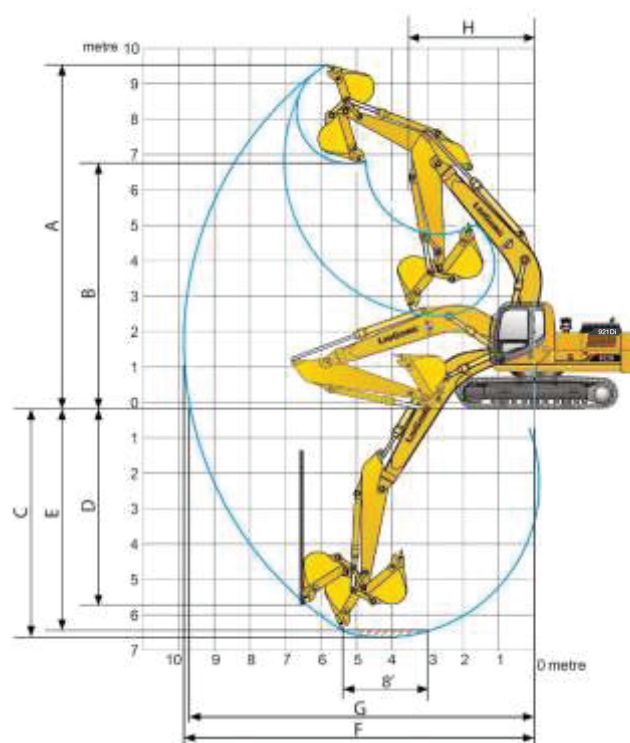
## OPTIONAL

Air Conditioner

## STATIC DIMENSIONS (Long Crawler- Optional)



## WORKING DIMENSIONS



Boom Length	5,680 mm
Arm Length	2,400 mm
Reference Bucket	0.95m <sup>3</sup>
A Dig Height	9,369 mm
B Dump Height	6,594 mm
C Dig Depth	5,875 mm
D Dig Depth of vertical	4,578 mm
E Depth of 8 bottom	5,662 mm
F Max reach	9,435 mm
G Reach at ground level	9,256 mm
H Min Swing Radius	3,526 mm
ISO Bucket Breakout Force	159 kN
ISO Arm Breakout Force	113 kN

## BUCKETS

General Purpose	0.95m <sup>3</sup>
Rock Bucket (HD)	0.87m <sup>3</sup>
Light Digging	1m <sup>3</sup>
Others (Range)	0.73-1.2m <sup>3</sup>

